

PB 12  
Pg 24  
Sheet 2 of 2

# WILLOUGHBY PLAT NO. 6

BEING A TRACT OF LAND LYING IN THE HANSON GRANT SITUATED IN MARTIN COUNTY, FLORIDA.

I, MARSHA STILLER, CLERK OF THE CIRCUIT COURT OF MARTIN COUNTY, FLORIDA, HEREBY CERTIFY THAT THIS PLAT WAS FILED FOR RECORD IN PLAT BOOK 12, PAGE 24, MARTIN COUNTY, FLORIDA, PUBLIC RECORDS, THIS DAY OF \_\_\_\_\_, 1989.

MARSHA STILLER, CLERK  
CIRCUIT COURT  
MARTIN COUNTY, FLORIDA

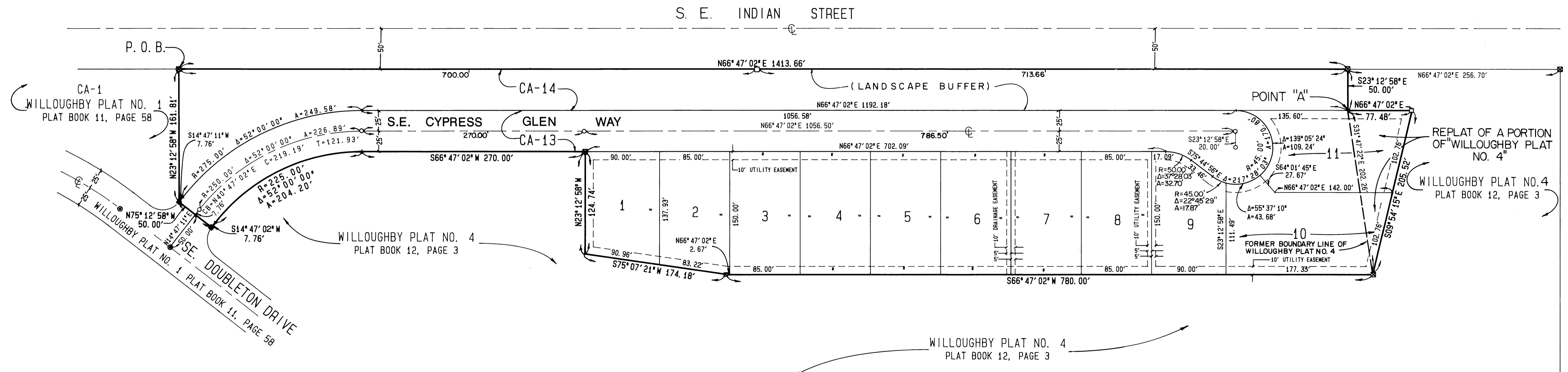
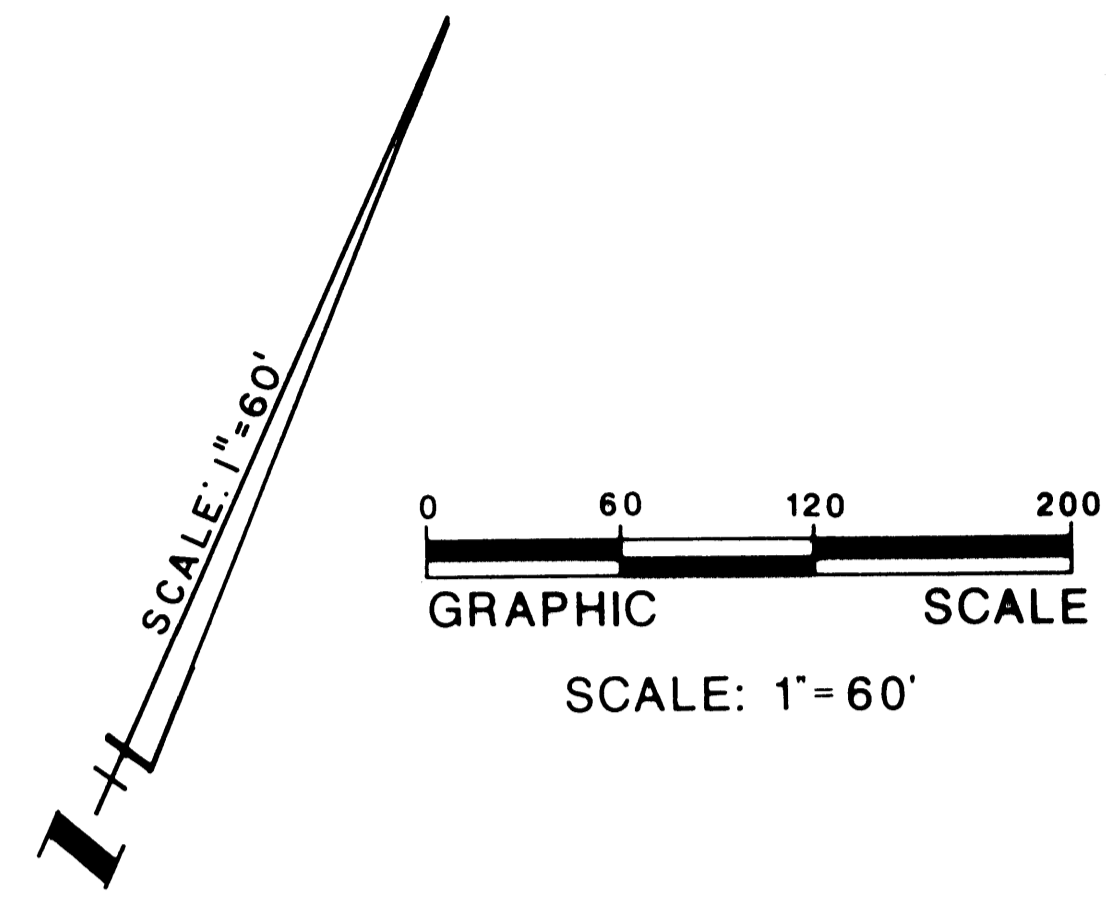
BY: \_\_\_\_\_  
DEPUTY CLERK

FILE NO. \_\_\_\_\_

SHEET 2 OF 2

**Hutcheon Engineers**  
a division of Kimley-Horn and Associates, Inc.  
11 East Osceola Street, Stuart, Florida 34994-2114

NOVEMBER 1989



**SURVEYOR'S NOTES:**

- A. THERE SHALL BE NO BUILDING, OR ANY OTHER KIND OF CONSTRUCTION, OR TREES OR SHRUBS PLACED ON DRAINAGE EASEMENTS.
- B. THERE SHALL BE NO BUILDINGS OR OTHER PERMANENT STRUCTURES PLACED ON UTILITY EASEMENTS.
- C. THERE SHALL BE NO LOT SPLITS EXCEPT TO CREATE LARGER LOTS.

**BASIS OF BEARINGS**  
BEARINGS SHOWN HEREON ARE REFERENCED TO U.S. HIGHWAY NO. 1 AS SHOWN ON FLORIDA D.O.T. RIGHT-OF-WAY MAP FOR SECTION NO. 89010-2114 DATED 8-19-60.

**LEGEND**

- ☒ FOUND PERMANENT REFERENCE MONUMENTS. (PRM) LB #3881 UNLESS OTHERWISE NOTED.
- SET PERMANENT REFERENCE MONUMENT. (PRM)
- FOUND PERMANENT CONTROL POINT. (PCP)
- SET PERMANENT CONTROL POINT. (PCP)
- C.A. COMMON AREAS.